



## Expanders



type: AL300

### General

Almex offers a range of expanders which improve the quality of finished feed as well as more efficient production process flow. The Almex Contivar expanders have a reliable and sturdy design and are equipped with an unique Active Disk system (AD-system) in order to control exact product output and assure the quality of the product. The AD-system is easy to control and it is easy to exchange wear parts.

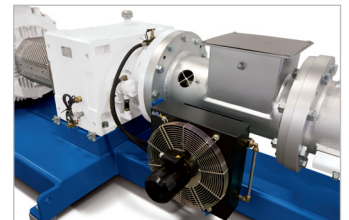
The robust and simple design of the Almex Contivar guarantees years of trouble free and economical production.

### Features

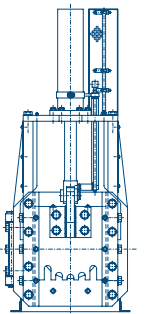
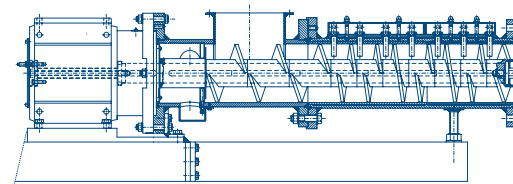
- » eliminate heat sensitive bacteria (salmonella)
- » addition of higher fats and liquids inclusions
- » gelatinization of available starches
- » improved end product durability and strength
- » increased output of pellet mill
- » reduces wear costs of pellet mill
- » improved water stability for fish feed
- » enhanced oil extraction
- » easy cleaning
- » less downtime for maintenance
- » low cost of wear parts



Feeder and insulated Conditioner with steamkit to be placed on top of the expander



Drive with combined gearbox-bearing assembly



Type	Main motor (kW)	Motor slide adjustment (Motorpower kW)	Barrel diameter (mm)	Capacity (t/h)
AL150	75	0,55	150	1-6
AL200	75-132	0,55	200	5-10
AL300	132-315	0,75	300	10-30

### Almex b.v.

Zutphen - The Netherlands  
 Tel.: +31 (0)575 57 26 66  
 info@almex.nl

..... [www.almex.nl](http://www.almex.nl)



## *Extruders and Expanders*

**ALMEX**  
*extrusion techniques*

Almex b.v.  
Verlengde Ooyerhoekseweg 29  
7207 BJ Zutphen  
The Netherlands

E [info@almex.nl](mailto:info@almex.nl)  
I [www.almex.nl](http://www.almex.nl)  
T +31 (0)575 57 26 66  
F +31 (0)575 57 27 27